


**MAC Concourse and Hub Tram
Conceptual Design Consulting
Services**

Catherine Judd – Needs Assessment Task Lead
Jessica Laabs – Stakeholder Engagement Task Lead

HDR 

June 2024

1

01

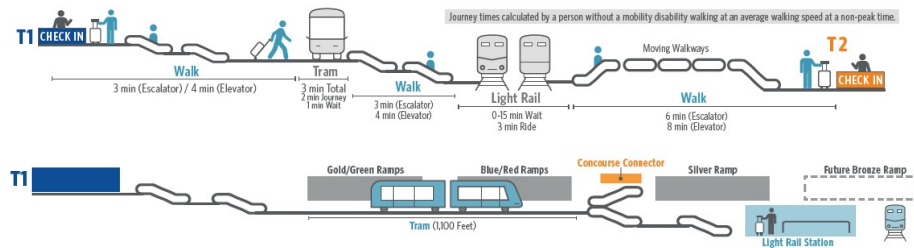
Mobility Study

Understand the dynamics and challenges for mobility at MSP to inform decisions.

2

A Complete Solution for Mobility and Experience

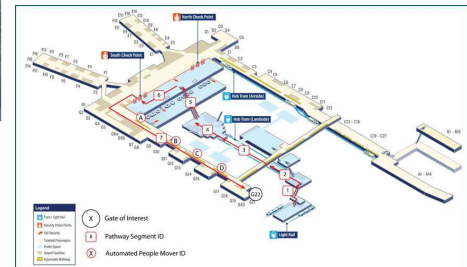
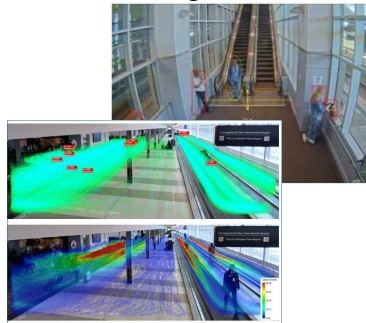
- A team of mobility and accessibility experts is collecting data
- Engaging stakeholders to understand existing conditions and needs for mobility at Terminal 1
- Seeking flexible and sustainable mobility options for decades to come



3

Existing Conditions Data Collection

- Flight Schedule and Checkpoint Data Processing
- Summarized Hourly Distribution of Annual North & South Checkpoint Counts at Terminal 1.
- AI supported PAX counts
- Mobility walk time journeys are being recorded and travel times documented to the highest volume gate usage



4

02

Schedule Overview

WE ARE HERE
WE WANT YOUR INPUT



5

03

Stakeholder Engagement via Survey

Strengths, **O**pportunities, **A**spirations
and **R**esults

Goal: Support alignment with multiple stakeholders

6

SOAR Analysis

Focus

- *What is MSP doing well in Mobility?*
- *What can MSP improve (feedback)?*
- *What are the most important mobility goals for your group (committee)?*

Outcome

- *Inform a SWOT (Strengths, Weaknesses, Opportunities, Threats) Analysis*
- *Identify Need Statement(s)*
- *Informs next phase and strategic planning*

7

Online Survey

Scan me

<turn on your camera and aim it at the QR code (right), when the yellow frame around the code appears, tap the screen of your smartphone with your finger to go to an interactive and brief web-based survey>

OR

Enter
<https://form.jotform.com/241374249567061>
on any web browser



8



Tell us how you move through the airport

Take the MSP Airport Mobility Survey!
 We want to understand ways people move through Terminal 1 today, and what you might like to see in the future. If you're an employee, volunteer, or traveler - your input will inform a current study to analyze mobility as the Hub and Concourse trams near the end of their useful lives. Help plan for the future of MSP!

<https://form.jotform.com/241374249567061>



9

Thank you

For helping us understand how you move at MSP and envision mobility for the future.

nodes **growth** preservation communication
 legibility destinations mode route *vision*
flexible comfort innovation choice

10